



Woodford Way | Heath Hayes, Cannock | WS12 3XJ  
Offers In The Region Of £220,000





## Summary

**\*\* WOW \*\* OUTSTANDING SEMI DETACHED HOME \*\* INTERNAL VIEWING IS ESSENTIAL \*\* CORNER PLOT \*\* SHOWHOME STANDARD THROUGHOUT \*\* TWO BEDROOMS \*\* REFITTED BATHROOM \*\* LOUNGE \*\* FABULOUS REFITTED KITCHEN \*\* SPACIOUS ORANGERY \*\* STUNNING LANDSCAPED GARDENS \*\* PRIVATE DRIVEWAY \*\* POPULAR LOCATION \*\* PRIME SCHOOL CATCHMENT \*\***

Webbs are pleased to offer this VERY WELL-PRESENTED semi-detached property situated on a popular estate in Heath Hayes, conveniently located close to Cannock town centre and all local amenities. Briefly comprising: hallway, lounge, FABULOUS REFITTED kitchen and orangery. On the first floor, the landing leads to two bedrooms and a REFITTED family bathroom. Externally, a private driveway provides ample off-road parking and STUNNING landscaped gardens. THIS HOME REALLY MUST BE VIEWED!

## Key Features

- STUNNING SEMI DETACHED HOME
- INTERNAL VIEWING IS ESSENTIAL
- REFITTED FAMILY BATHROOM
- SPACIOUS ORANGERY
- PRIVATE PRIVATE DRIVEWAY
- SOUGHT AFTER LOCATION
- TWO BEDROOMS
- LOUNGE & STUNNING BREAKFAST KITCHEN
- FABULOUS LANDSCAPED GARDENS
- SHOWHOME STANDARD THROUGHOUT

## Rooms and Dimensions

### AWAITING VENDOR APPROVAL

### ENTRANCE HALLWAY

### LOUNGE

13'1" x 10'8" (4.01m x 3.27m)

### STUNNING KITCHEN

13'10" x 7'4" (4.24m x 2.24m)

### ORANGERY

12'7" x 9'10" (3.84m x 3.02m)

### LANDING

### BEDROOM ONE

14'0" x 11'6" (4.28m x 3.52m )

### BEDROOM TWO

9'1" x 7'10" (2.79m x 2.39m)

### REFITTED FAMILY BATHROOM

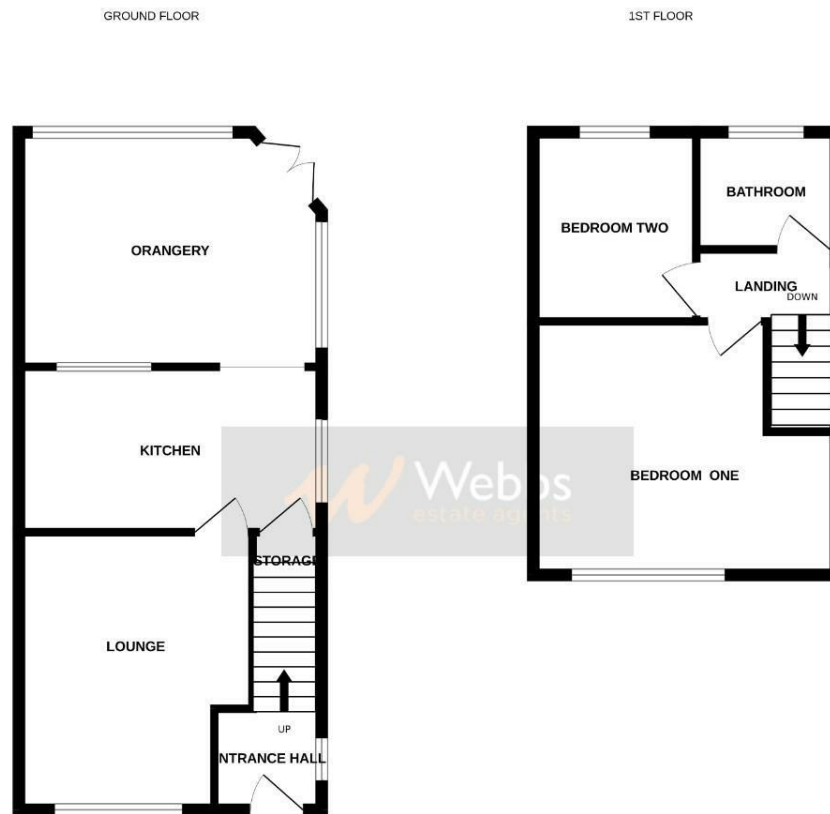
### STUNNING LANDSCAPED GARDENS

### GENEROUS PRIVATE DRIEVDWAY



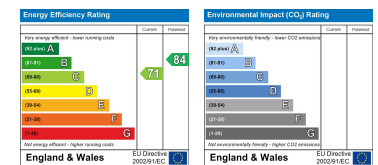






Whilst every attempt has been made to ensure the accuracy of the floorplan contained here, measurements of doors, windows, rooms and any other items are approximate and no responsibility is taken for any error, omission or mis-statement. This plan is for illustrative purposes only and should be used as such by any prospective purchaser. The services, systems and appliances shown have not been tested and no guarantee as to their operability or efficiency can be given.  
Made with Metropix ©2024

Webbs Estate Agents - endeavour to maintain accurate depictions of properties in Virtual Tours, Floor Plans and descriptions, however, these are intended only as a guide and purchasers must satisfy themselves by personal inspection.



153 Avon Road, Cannock, WS11 1LF

Tel: 01543 468846 | Email: [sales@webbestateagents.co.uk](mailto:sales@webbestateagents.co.uk) | [www.webbestateagents.co.uk](http://www.webbestateagents.co.uk)

**Webbs**  
estate agents